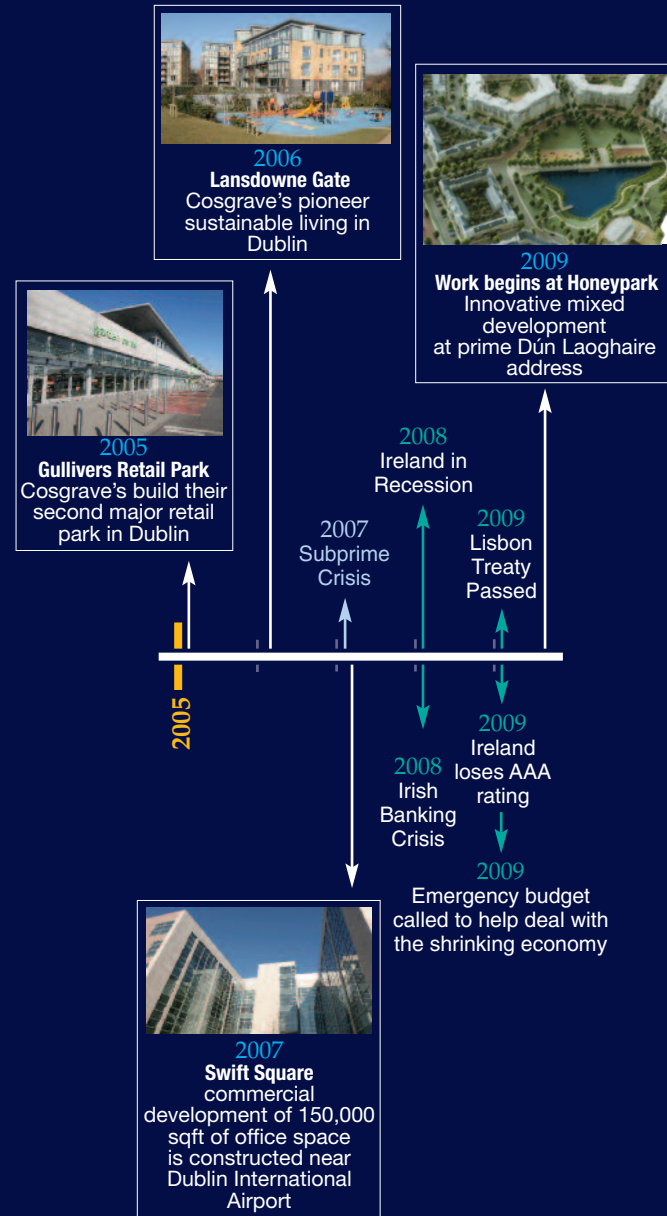


2005 - 2009 Managing Change



In 2005 Gulliver's Retail Park was built consisting of a retail park and office development in Santry comprising of 270,000 square feet (25,083 sqm) of commercial space.

In 2006 the Group helped pioneer a sustainable building concept in building Lansdowne Gate, which consisted of 280 apartments, offices and a crèche. The development incorporated many environmentally friendly features including a state of the art communal heating system which reduced emissions and fuel consumption by 30%.

During this time they were also building Eden Gate and Eden Wood, two superb residential mixed developments of outstanding quality that led to Cosgrave's being awarded "Developer of the Year in 2007" in the Irish Property Awards.

In 2009 Cosgrave's started Honeypark on the 82 acre former Dún Laoghaire Golf Club consisting of new homes, a crèche, two public parks, a bowling club and a local shopping complex, continuing their ethos of creating developments that people aspire to live in.

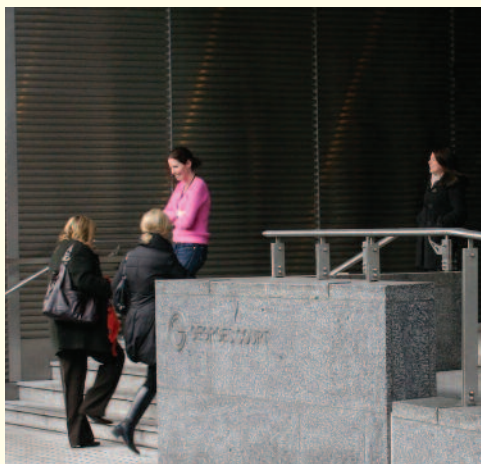
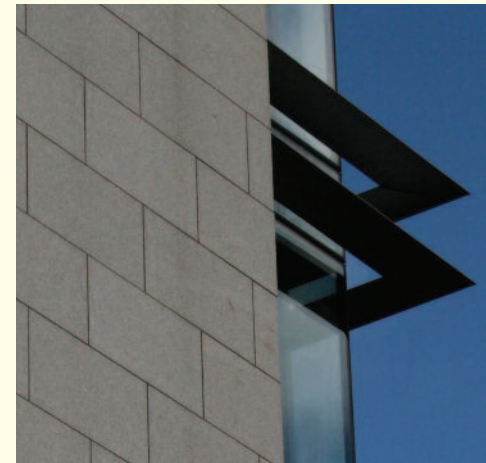
DEVELOPMENT	RESIDENTIAL UNITS	COMMERCIAL SPACE
2005 Georges Court, D2.	4	104,000SQFT/9,661SQM
2005 Gullivers Retail Park, Santry, D9.	•	112,000SQFT/10,405SQM
2005 The Gulliver Centre, Santry, D9.	•	18,000SQFT/1,672SQM
2005 Ivy Exchange, Parnell Street, D1.	199	81,000SQFT/7,525SQM
2006 Eden Gate Centre, Delgany, Co Wicklow.	•	30,171SQFT/2,803SQM
2006 Eden Wood, Delgany, Co Wicklow.	70	•
2006 Riversdale, Upper Dargle Road, Bray.	124	10,000SQFT/929SQM
2007 Swift Square, Santry, D9.	•	150,000SQFT/13,935SQM
2007 Seamount, Delgany, Co Wicklow.	24	•
2008 Lansdowne Gate, Drimnagh, D12.	280	•
2008 Gullivers Retail Park (Second Phase), Santry, D9.	•	30,000SQFT/2,787SQM
2008 Enterprise Centre, Lansdowne Gate, Drimnagh, D12.	•	14,370SQFT/1,335SQM
2009 Enniskerry Football Club, Enniskerry, Co Wicklow.	•	*
2009 Honeypark, Dún Laoghaire - Phase One	818	•
TOTAL	1,521	549,541SQFT/51,052SQM

* CLUBHOUSE AND PLAYING FIELDS

Georges Court

Dublin 2.

Project Summary
New build commercial
Constructed in 2005
99,000 sqft / 9,197 sqm office space
5,000 sqft / 464 sqm leisure
4 luxury city centre apartments



Gullivers Retail Park

Santry, Dublin 9.

Project Summary
New build commercial
Constructed in 2005
112,000 sqft / 10,404 sqm retail space



The Gulliver Centre

Santry, Dublin 9.

Project Summary

New build commercial

Constructed in 2005

18,000 sqft / 1,672 sqm retail space



Ivy Exchange

Parnell Street, Dublin 1.

Project Summary
New build residential / commercial
Constructed in 2005
199 city centre apartments
60,000 sqft / 5,574 sqm retail space
21,000 sqft / 1,951 sqm office space



Eden Gate Centre

Delgany, County Wicklow.

Project Summary

New build commercial

Constructed in 2006

21,000 sqft / 1,950 sqm retail space

9,171 sqft / 852 sqm creché



Riversdale

Bray, County Wicklow.

Project Summary

New build residential / commercial

Constructed in 2006

124 luxury apartments

10,000 sqft / 929 sqm creché



Eden Wood

Delgany, County Wicklow.

Project Summary

New build residential

Constructed in 2006

30 luxury houses

40 luxury apartments



Cosgrave

Seamount

Delgany, County Wicklow.

Project Summary

New build residential

Constructed in 2007

24 luxury apartments



Swift Square

Santry, Dublin 9.

Project Summary
New build commercial
Constructed in 2007
150,000 sqft / 13,935 sqm office space



Lansdowne Gate

Lansdowne Valley, Dublin 12.

Project Summary

New build residential

Constructed in 2008

280 luxury apartments



Gullivers Retail Park Second Phase

Santry, Dublin 9.

Project Summary
New build commercial
Constructed in 2008
30,000 sqft / 2,787 sqm retail space



Enterprise Centre

Lansdowne Gate, Dublin 12.

Project Summary
New build commercial
Constructed in 2008
5,500 sqft / 511 sqm commercial / enterprise space
8,870 sqft / 824 sqm creché

