

A Sustainable Future



Following the success of Honeypark and Cualanor, the Group is committed to sustainable development, enhanced community benefit, new technologies and above all the delivery of quality living environments. The redevelopment of Dun Laoghaire Golf Club is widely regarded as the finest example of a mixed development of its kind. Projects of the future will benefit from this expertise to deliver the sustainable, stylish and amenity rich communities of tomorrow.

Fassaroe and Old Conna sites have each been selected for their suitability for mixed development and long term sustainability. These mixed development sites will provide the optimal scale to facilitate the infrastructure, childcare, leisure, schools and commercial elements that sustainable communities rely on to reduce their dependence on carbon fuels.

However, it is their expertise, tried and tested resources and reputation that perhaps gives these sites their competitive advantage. These are the Cosgrave developments of tomorrow.

DEVELOPMENT	PROPOSED RESIDENTIAL UNITS	PROPOSED COMMERCIAL SPACE
Blackwood Square	325	•
Cheevers Court & Haliday House	368	•
Fassaroe, Bray, Co Wicklow.	2,050	339,074sqft/31,500sqm
Old Conna, Bray, Co Wicklow.	2,000	•
Annabasky Glen, Enniskerry, Co.Wicklow	12	•
TOTAL	4,773	339,074sqft/31,500sqm

Blackwood Square

Northwood, Santry Demesne, Dublin 9.



Project Summary

New build residential

325 apartments



Cheevers Court & Haliday House

Cualanor, Dún Laoghaire, Co. Dublin.

Project Summary

New build residential

368 apartments



Fassaroe

Bray, County Wicklow.

Project Summary

New build mixed development

2,050 sustainable homes

339,074sqft/31,500sqm commercial



Old Conna

Bray, County Wicklow.

Project Summary

New build mixed development

Potential 2,000 new homes



TYPICAL HOUSE

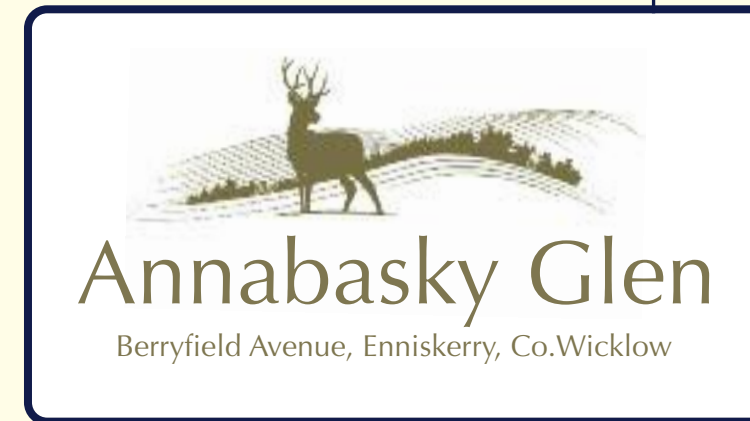
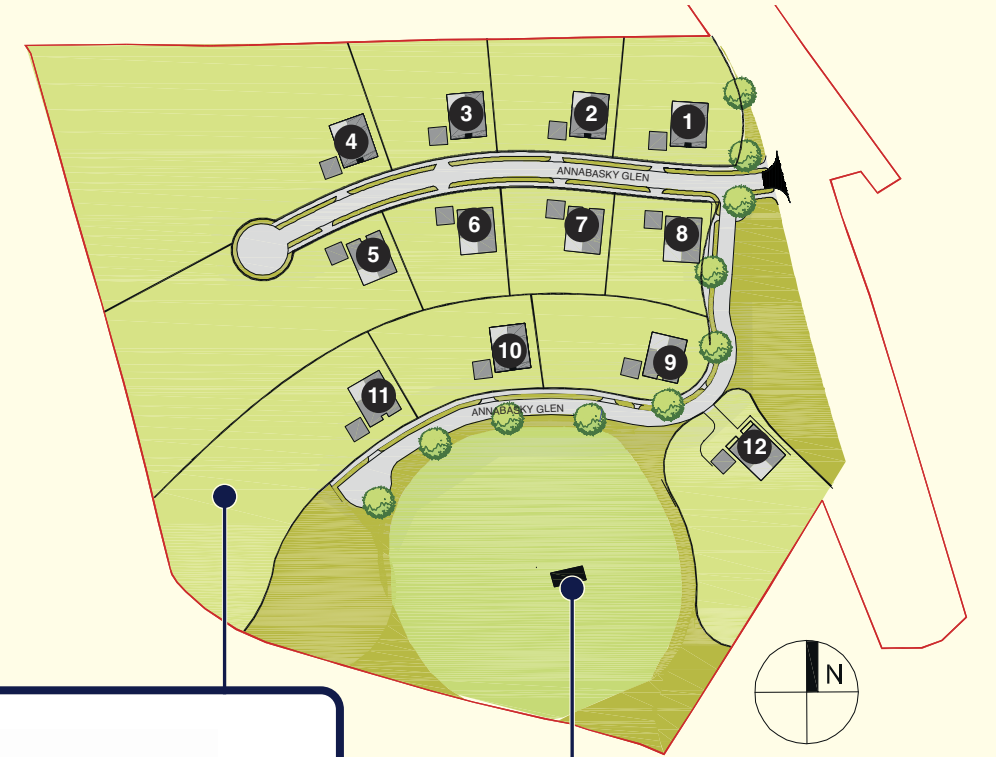
Annabasky Glen

Berryfield Avenue, Enniskerry, Co. Wicklow

Project Summary

Residential

12 new homes



Conclusion



Cosgrave brothers set out in 1979 to build better homes, and evolved to become experts in the building of better communities. A tour of their developments charts their steady progress and reveals their capacity to enhance the environment and enrich the community.

With a long line of inspirational and memorable developments to their credit, they are embarking on a new era where unequalled customer satisfaction and an unparalleled reputation in the marketplace will be important assets. People buy what they are comfortable with and nothing is as reassuring in Irish property, as the two words “Cosgrave Built”.

The Group are renowned for choosing the right product for the right site and delivering that product to maximise its appeal to their target market, it is this proven track record that will see Cosgrave Group through the next decades.

Project Index

PAGE	DEVELOPMENT	RESIDENTIAL UNITS	COMMERCIAL
18	1979 - 1984 Farmleigh, Stillorgan, Co Dublin.	5	•
•	Wheatfield & Oatfield Estate, D22.	55	•
•	Millrose Estate, Bluebell Avenue, D12	14	•
•	Whitehall Road West, Dublin.	5	•
19	Aylesbury, D24.	29	•
20	Ophaly Court, Dundrum, D14.	20	•
21	Cowper Downs, Cowper Road, D6.	21	•
22	Belville, Ailesbury Road, Donnybrook, D4.	48	•
•	Westmoreland Park, Ranelagh, D6.	1	•
26	1985 - 1989 Morehampton Square, Donnybrook, D4.	85	•
30	Donnybrook Manor, Belmont Avenue, D4.	134	•
32	Eblana Villas, Grand Canal Street, D2. JV	12	12,000sqFT/1,115sqM
33	Chesterfield, Castleknock, D15.	76	•
34	Shrewsbury, Ballsbridge, D4.	101	•
38	1990 - 1994 Crannagh, Milltown, D6.	17	•
39	Camden Lock, South Docklands, D4.	77	•
40	Salthill, Monkstown, Co Dublin.	108	•
42	Integrity House, South Docklands, D4.	•	6,250sqFT/580sqM
•	St Patrick's Road, Dalkey, Co Dublin. JV	5	•
•	Caryfort Court, Dalkey, Co Dublin. JV	5	•
43	The Sweepstakes, Ballsbridge, D4.	247	•
•	Monkstown Gate, Monkstown, Co Dublin. JV	8	•
46	Custom Hall, Gardiner Street, D1.	173	•
•	Airfield Park, Donnybrook, D4. JV	3	•
48	Clipper View, Sarsfield Quay, D7.	24	•
49	Grafton Hall, Aungier Street, D2.	62	5,000sqFT/465sqM
•	Cedar Cottages, Stillorgan, Co Dublin. JV	5	•
50	Ha'penny Bridge House, Ormond Quay, D1.	76	5,000sqFT/465sqM
51	Lisalea, Frascati Park, Blackrock, Co Dublin.	39	•
52	Christchurch Hall, High Street, D8.	40	10,000sqFT/930sqM
•	Liffey Street West, D7. JV	8	•
•	Ranelagh Road, Ranelagh, D6. JV	7	•
53	The Northumberland, Lower Mount Street, D2.	162	•
56	1995 - 1999 Clearwater Cove, Dún Laoghaire.	126	•
58	Rathmines Town Centre, Rathmines, D6.	169	50,000sqFT/4,645sqM
•	Shandon Green, Phibsborough, D7. JV	11	•
59	West Pier Business Campus, Dún Laoghaire.	•	110,000sqFT/10,219sqM
•	Woodpark, The Rise, Glasnevin, D11. JV	3	•
60	Harcourt Green, Charlemount Street, D2.	169	15,000sqFT/1,393sqM
•	Glengariff Crescent, St Ignatius Ave, D7. JV	19	•
62	The Orchard / The Courtyard, Ranelagh, D6.	25	•
•	30 Whitehall Road, D14.	1	•
64	Fitzwilliam Quay, Ringsend, D4.	102	9,500sqFT/882sqM
66	Pembroke Square, Grand Canal Street, D2.	201	•
70	Simmons Court Square, Ballsbridge, D4.	72	•
•	Glenarm Square, Dargle Road, Drumcondra, D9.	39	•
74	St Helen's Hotel, Stillorgan, Co Dublin.	•	100,000sqFT/9,290sqM
78	Temple Manor, Celbridge, Co Kildare.	96	•
79	Westend Village, Blanchardstown.	144	•
80	Westend Retail Park, Blanchardstown.	•	200,000sqFT/18,580sqM
82	Cape House, Blanchardstown.	•	65,000sqFT/6,038sqM
84	Westend Commercial Village, Blanchardstown.	•	37,000sqFT/3,437sqM
•	Millar's Wood, Herbert Road, Bray. JV	22	•
86	Ardilea Wood, Clonskeagh, D14.	11	•
90	2000 - 2004 Quay Gate, Station Road, Belfast, BT3 9DB. JV	118	10,000sqFT/929sqM
•	Clonliffe Court, Distillery Road, Drumcondra, D9. JV	42	•
91	St James's Wood, South Circular Road, D8.	119	•
92	Vista Tec House, South Circular Road, D8.	•	20,000sqFT/1,858sqM
93	Hampton Square, Navan Road, D7.	244	•
94	Georges Quay, D2.	•	250,000sqFT/23,225sqM
98	Derrynane Square, Lower Dorset Street, D1.	164	•
•	Derrynane House, Lower Dorset Street, D1.	•	10,000sqFT/929sqM
100	Gracepark Manor, Drumcondra, D9.	159	•
104	La Vallee, Bray, Co Wicklow.	78	•
106	La Vallee House, Bray, Co Wicklow.	•	15,000sqFT/1,393sqM

PAGE	DEVELOPMENT	RESIDENTIAL UNITS	COMMERCIAL
108	Howth Lodge, Howth, Co Dublin.	55	•
110	Burnaby Mews, Greystones, Co Dublin.	43	•
111	Meridian Point, Greystones, Co Dublin.	•	28,000sqFT/2,601sqM
112	Hogan Place, Grand Canal Street, D.2.	14	11,000sqFT/1,022sqM
114	Eden Gate, Delgany, Co Wicklow.	386	•
118	Dún Laoghaire Golf Club, Ballyman, Co Wicklow.	•	45,000sqFT/4,180sqM PLUS 27 HOLE GOLF COURSE
122	2005 - 2009 Georges Court, D2.	4	104,000sqFT/9,661sqM
124	Gullivers Retail Park, Santry, D9.	•	112,000sqFT/10,405sqM
126	The Gulliver Centre, Santry, D9.	•	18,000sqFT/1,672sqM
127	Ivy Exchange, Parnell Street, D1.	199	81,000sqFT/7,525sqM
128	Eden Gate Centre, Delgany, Co Wicklow.	•	30,171sqFT/2,803sqM
129	Eden Wood, Delgany, Co Wicklow.	70	•
130	Riversdale, Upper Dargle Road, Bray.	124	10,000sqFT/929sqM
131	Seamount, Delgany, Co Wicklow.	24	•
132	Swift Square, Santry, D9.	•	150,000sqFT/13,935sqM
134	Lansdowne Gate, Drimnagh, D12.	280	•
136	Gullivers Retail Park (Second Phase), Santry, D9.	•	30,000sqFT/2,787sqM
137	Enterprise Centre, Lansdowne Gate, Drimnagh, D12.	•	14,370sqFT/1,335sqM
140	2010 - 2015 Rochdale	143	•
142	Claremont Avenue	21	•
144	McDonalds	•	3,885sqFT/361sqM
145	Bowl's Club	•	1,636sqFT/152sqM
146	Marconi Crescent	44	•
148	Enniskerry Youth Club AFC	•	2,648sqFT/246sqM PLUS CLUBHOUSE AND PLAYING FIELDS
149	Westmoreland House	•	20,182sqFT/1,875sqM
150	Brickfield (Phase 1)	30	•
152	Parkpointe	•	27,556sqFT/2,560sqM
154	Brickfield (Phase 2)	74	•
160	2015 - 2019 Carnegie Drive	69	•
162	Bracken Park Drive	54	•
166	Bracken Park Close	24	•
168	Bracken View	23	•
170	Sundays Well	20	•
172	Garryknock	27	•
174	Thormanby	16	•
176	Roseland	100	•
178	Neptune Building	197	•
182	Abbot Court	191	•
184	Greenbank House	35	•
186	Exchange Building	•	120,000sqFT/1,1148sqM
188	Eustace Court	96	•
192	Leona	160	•
196	Charlotte	159	•
200	Cedarview (Phase 1)	41	•
202	Fairways	78	•
206	Cedarview (Phase 2)	63	•
208	Bridgefield	216	•
210	Fairway Apartments	214	•
213	Pappan Grove	35	•
216	FUTURE PROJECTS Blackwood Square	circa 325	•
217	Cheevers Court & Holiday House	368	•
218	Fassaroe	2,050	339,074sqFT/31,500sqM
220	Old Conna	2,000	•
221	Annabasky Glen	12	•
TOTAL BUILT		7,135	1,736,940 sqFT / 161,367 sqMT

• denotes development not photographed
JV denotes joint venture

