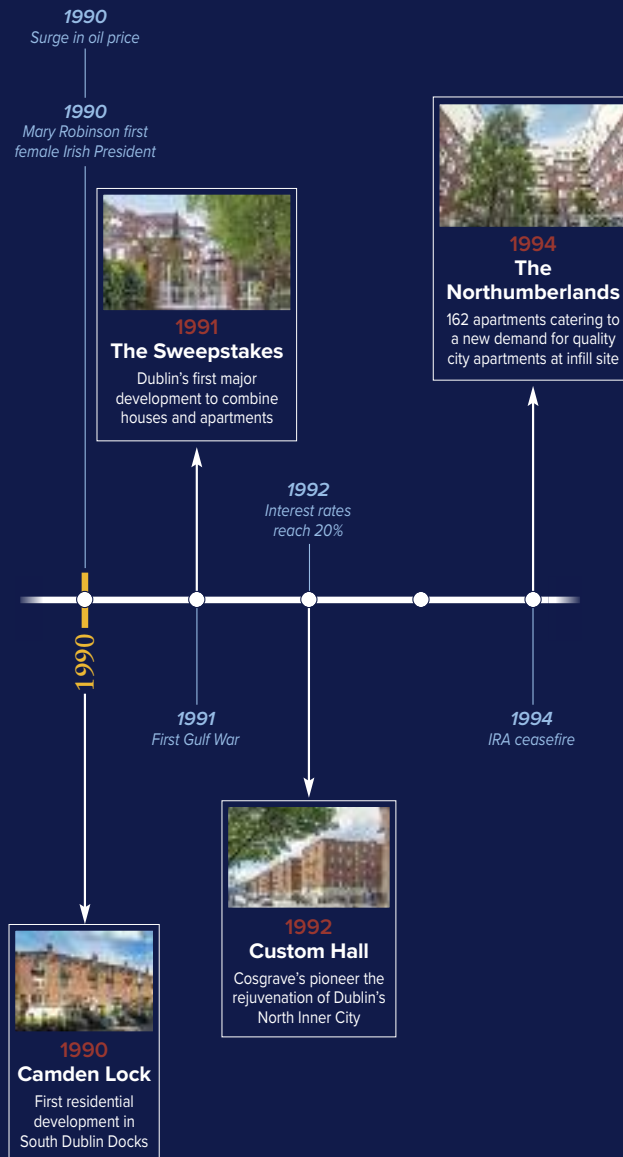


# 1990 - 1994 Expanding the Vision



By 1990 they began producing mixed developments adding retail and office space to the residential elements. At Camden Lock they became the first to re-develop in the south Dublin Docklands. More mixed developments were successfully undertaken at Ha'penny Bridge House on Ormond Quay and Grafton Hall on Aungier Street.

In 1991 Cosgrave's built the now famous Sweepstakes in Ballsbridge. This became a flagship development for the city; its 247 units made it the first major combined apartment and townhouse development in Dublin. In 1992 Cosgrave's completed Custom Hall on Gardiner Street, this was a brave step that made them the first developer to take on the rejuvenation of the North Inner City.

The Group continued their production of high value apartments and duplex homes with projects like The Northumberlands at Lower Mount Street and Salthill in Monkstown.

DEVELOPMENT	RESIDENTIAL UNITS	COMMERCIAL SPACE
1990 Crannagh, Milltown, D6.	17	•
1990 Camden Lock, South Docklands, D4.	77	•
1990 Integrity House, South Docklands, D4.	•	6,250SQFT/580SQM
1990 Salthill, Monkstown, Co Dublin.	108	•
1991 St Patrick's Road, Dalkey, Co Dublin.	5	•
1991 Caryfort Court, Dalkey, Co Dublin.	5	•
1991 The Sweepstakes, Ballsbridge, D4.	247	•
1992 Monkstown Gate, Monkstown, Co Dublin.	8	•
1992 Custom Hall, Gardiner Street, D1.	173	•
1993 Airfield Park, Donnybrook, D4.	3	•
1993 Clipper View, Sarsfield Quay, D7.	24	•
1993 Grafton Hall, Aungier Street, D2.	62	5,000SQFT/465SQM
1993 Cedar Cottages, Stillorgan, Co Dublin.	5	•
1993 Ha'penny Bridge House, Ormond Quay, D1.	76	5,000SQFT/465SQM
1994 Lisalea, Frascati Park, Blackrock, Co Dublin.	39	•
1994 Christchurch Hall, High Street, D8.	40	10,000SQFT/930SQM
1994 Liffey Street West, D7.	8	•
1994 Ranelagh Road, Ranelagh, D6.	7	•
1994 The Northumberlands, Lower Mount Street, D2.	162	•
<b>TOTAL</b>	<b>1,066</b>	<b>26,250SQFT/2,438SQM</b>

# Crannagh

Prospect Lane, Milltown, Dublin 6.

## Project Summary

New build residential

Constructed in 1990

**17 luxury townhouses**



# Camden Lock

South Dublin Docklands, Dublin 4.

## Project Summary

New build residential

Constructed in 1990

**45 luxury apartments**

**22 duplex homes**



# Salthill

Monkstown, County Dublin.

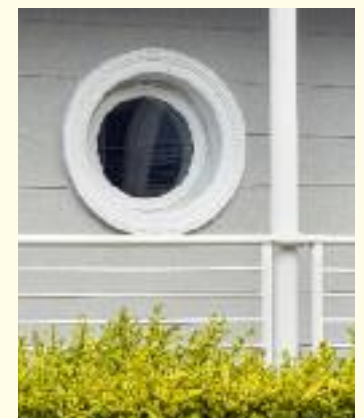
## Project Summary

New build residential

Constructed in 1990

**36 duplex homes**

**72 luxury apartments**



# Integrity House

South Dublin Docklands, Dublin 4.



Project Summary
New build commercial
Constructed in 1990
<b>6,250 sqft / 580 sqm office space</b>



# The Sweepstakes

Ballsbridge, Dublin 4.



## Project Summary

New build residential

Constructed in 1991

**197 luxury apartments**

**32 exclusive houses**

**18 luxury cottages**



# Custom Hall

Gardiner Street, Dublin 1.

## Project Summary

New build residential

Constructed in 1992

**173 city centre apartments**



# Clipper View

Sarsfield Quay, Dublin 7.

## Project Summary

New build residential

Constructed in 1993

**24 city centre apartments**



# Grafton Hall

Aungier Street, Dublin 2.

## Project Summary

New build residential / commercial

Constructed in 1993

**62 city centre apartments**

**5,000 sqft / 464 sqm retail space**



# Ha'penny Bridge House

Ormond Quay, Dublin 1.

<b>Project Summary</b>
New build residential / commercial
Constructed in 1993
<b>76 city centre apartments</b>
<b>5,000 sqft / 464 sqm retail space</b>



# Lisalea

Frascati Park, Blackrock, County Dublin.

<b>Project Summary</b>
New build residential
Constructed in 1994
<b>39 luxury apartments</b>





# Christchurch Hall

High Street, Dublin 8.

## Project Summary

New build residential / commercial

Constructed in 1994

**40 city centre apartments**

**10,000 sqft / 929 sqm retail space**



# The Northumberlands

Lower Mount Street, Dublin 2.

## Project Summary

New build residential

Constructed in 1994

**162 luxury city apartments**

